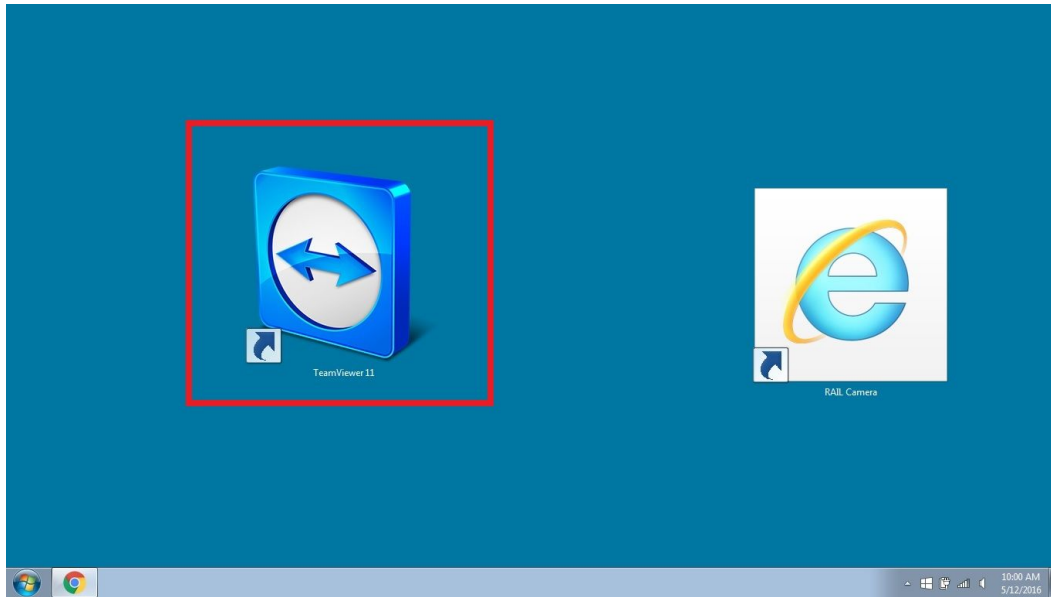


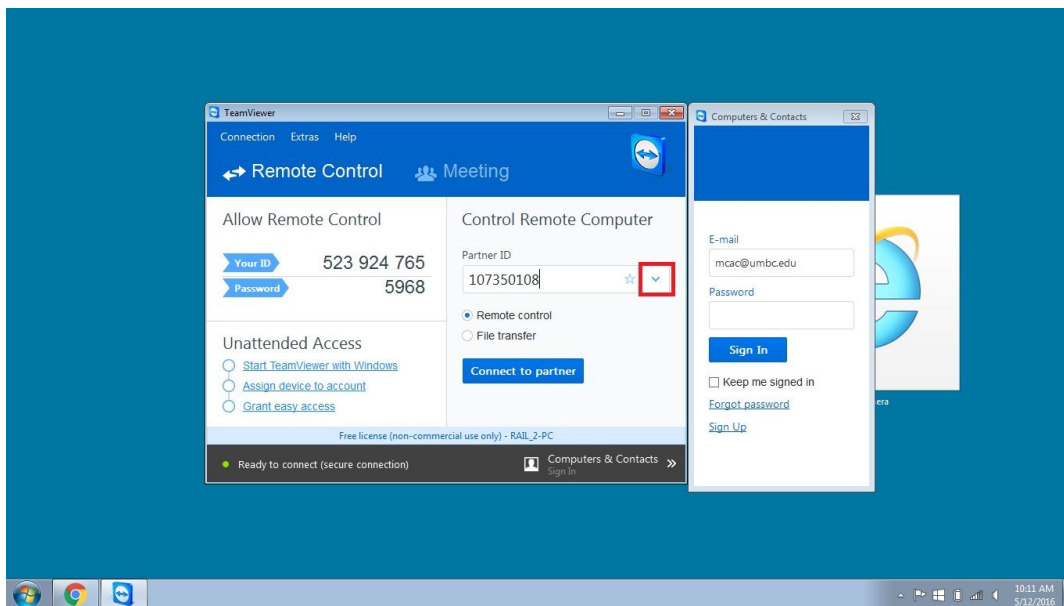
Team Viewer 11 Software

1. Double Click on the Team Viewer 11 Icon on the laptop desktop screen.

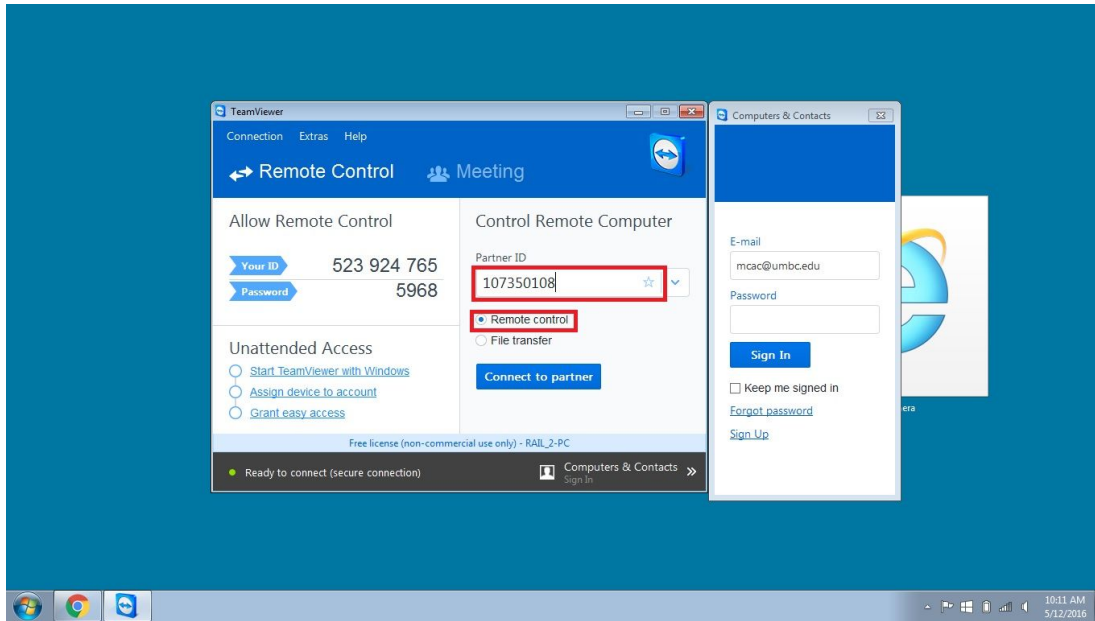


Remote Desktop Access

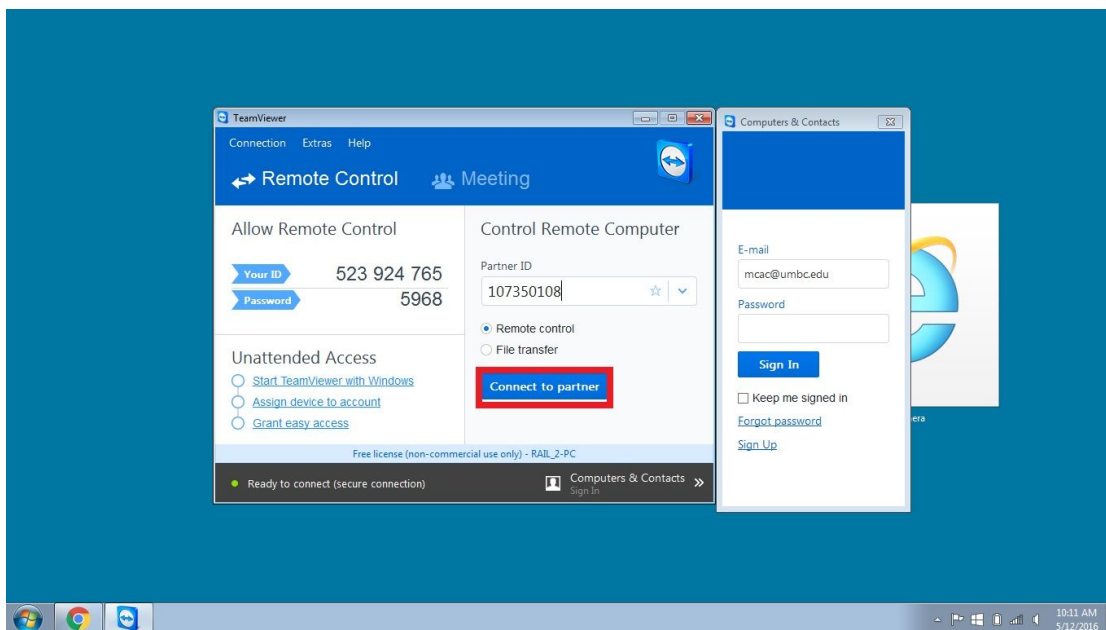
1. Click on the drop down tab to the right of the "Partner ID" Box.



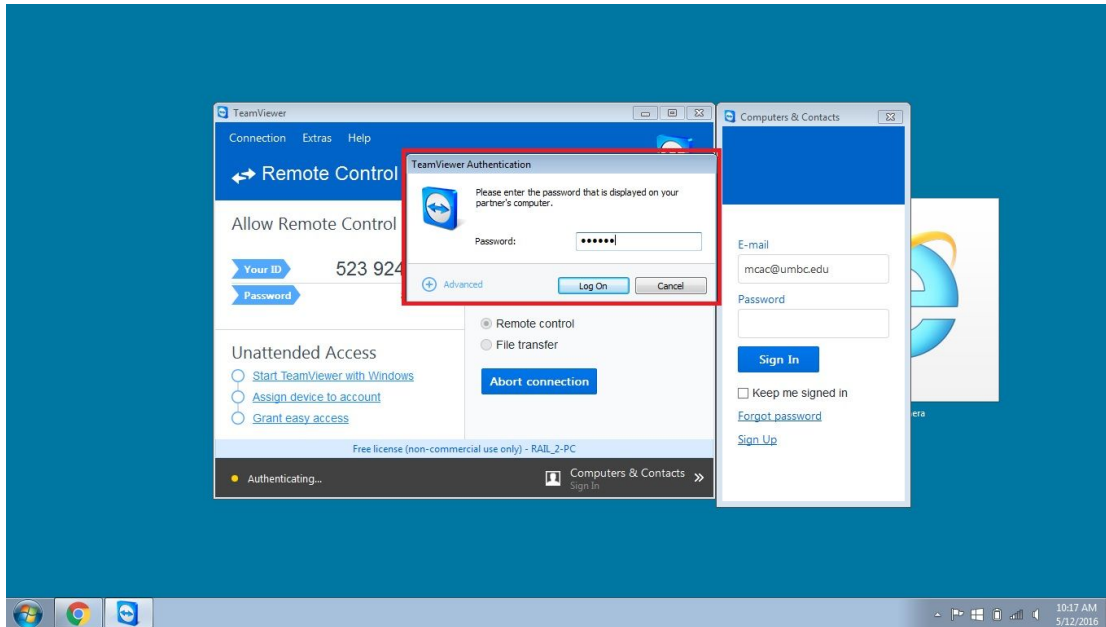
2. Select the Partner ID 107350108 (also listed on sticky note on laptop) and make sure the "Remote Control" option is selected.



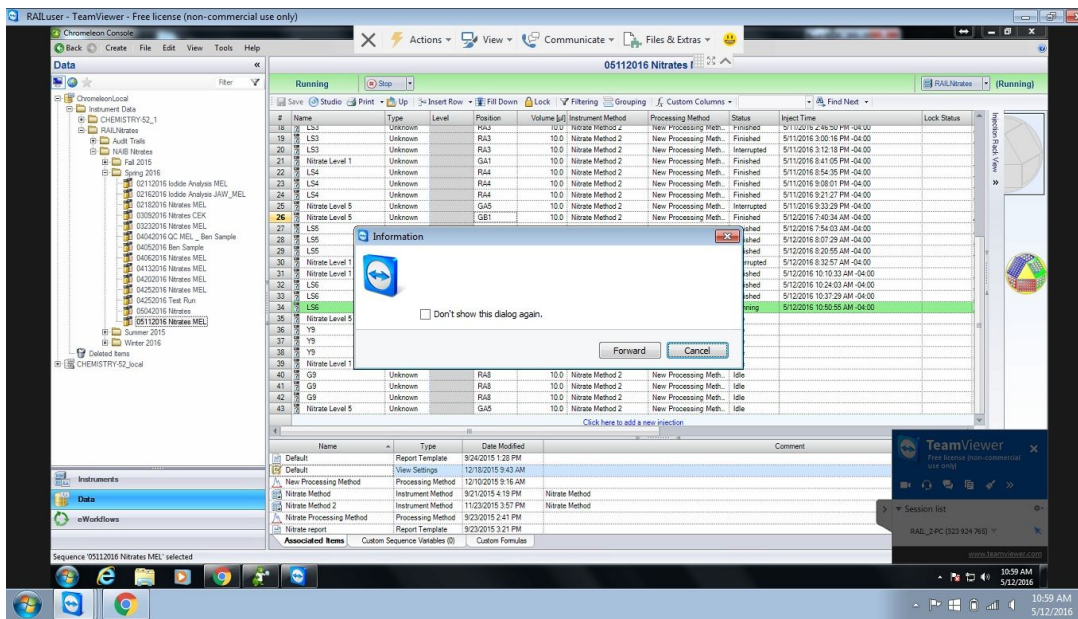
3. Click the blue “Connect to partner” box.



4. A “Team Viewer Authentication” box will pop up and prompt you to enter a password. Enter the password “679bkt” in the password box. (The password is also listed on the laptop).



5. A window will open that displays the desktop screen from the computer that runs the Ion Chromatograph Instrument, and should have the Chromeleon software already open. From this step please refer to the “How to run samples (remote-in day)” document.



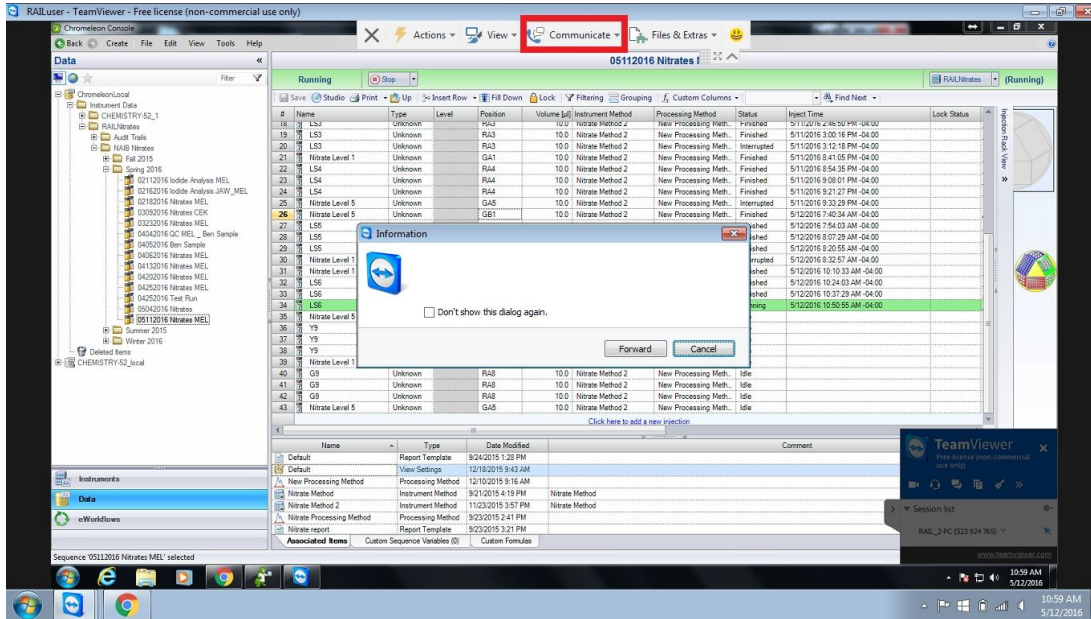
6. To exit Remote Desktop simply click the “X” button in the top right hand corner.

Operating Ion Chromatograph Software - Chromeleon 7

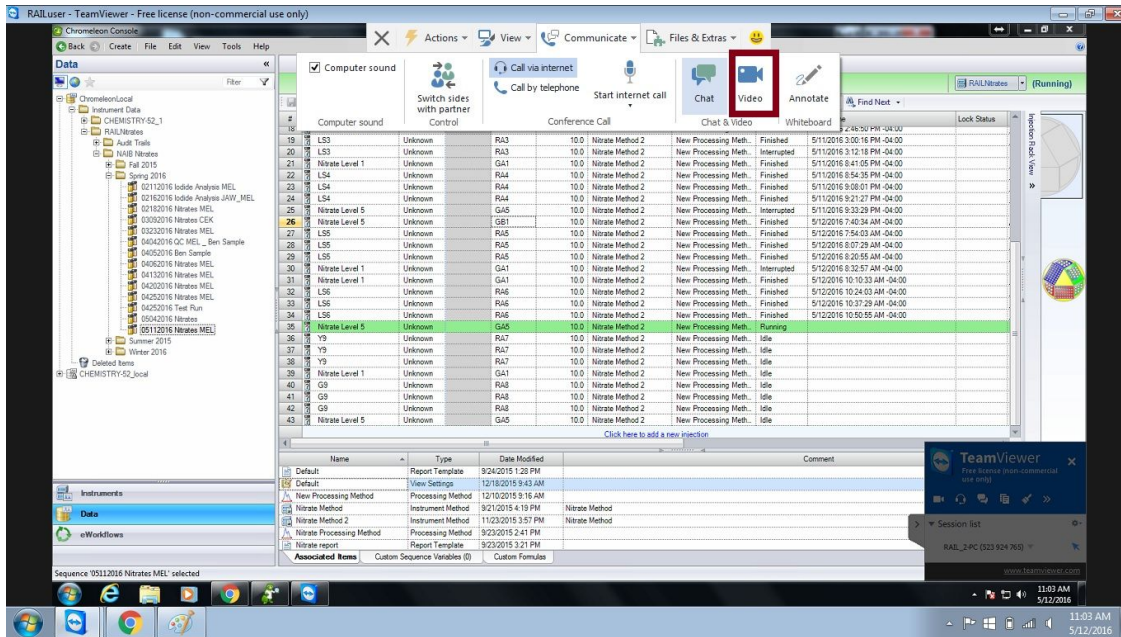
1. Please refer to the “How to run samples (remote- in day)” Document

Video Call Access

1. Once you have gained remote desktop access using the instructions above, click on the “Communicate” tab located in the top menu on the Team Viewer window.



2. A menu will open underneath- click on the “Video” button to initiate a video call.

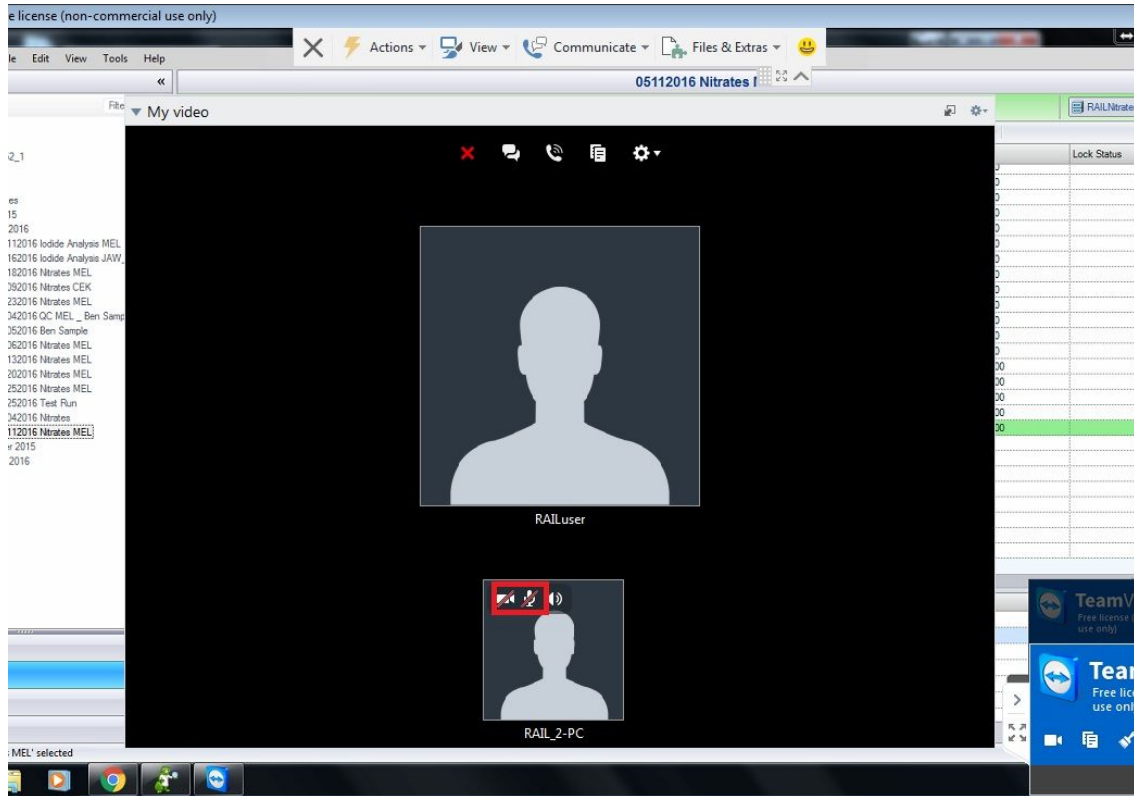


3. A window will pop-up in the bottom right hand corner to initiate the video call. Click on the “maximize window icon” highlighted in the red box in the image below.

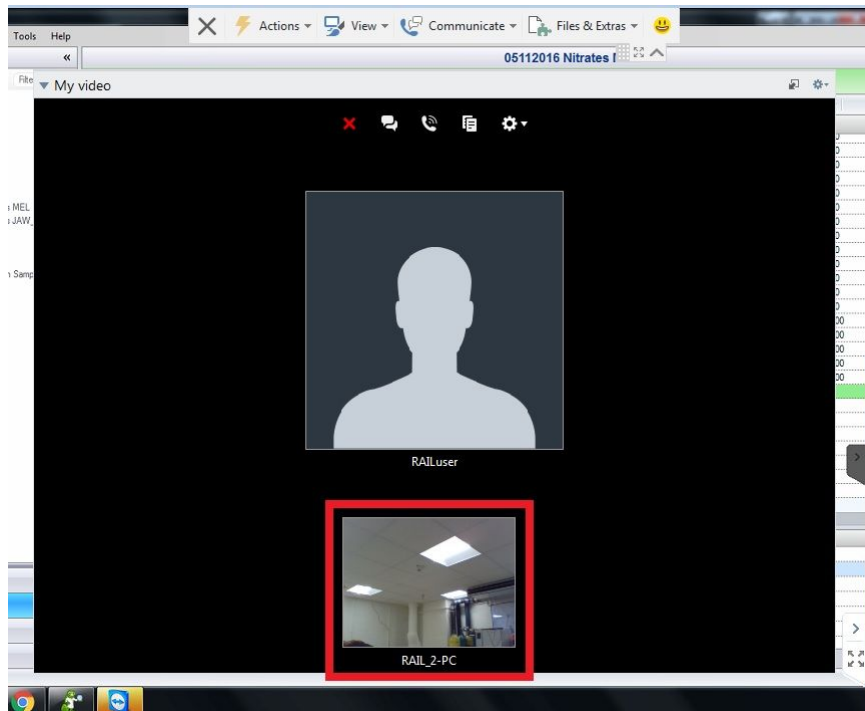
The screenshot shows a chromatography software interface with a data table and a TeamViewer video call window. The data table has the following columns: Volume [µl], Instrument Method, Processing Method, Status, Inject Time, and Lock Status. The TeamViewer window is titled "TeamViewer" and includes a "My video" section with a red box highlighting the maximize icon.

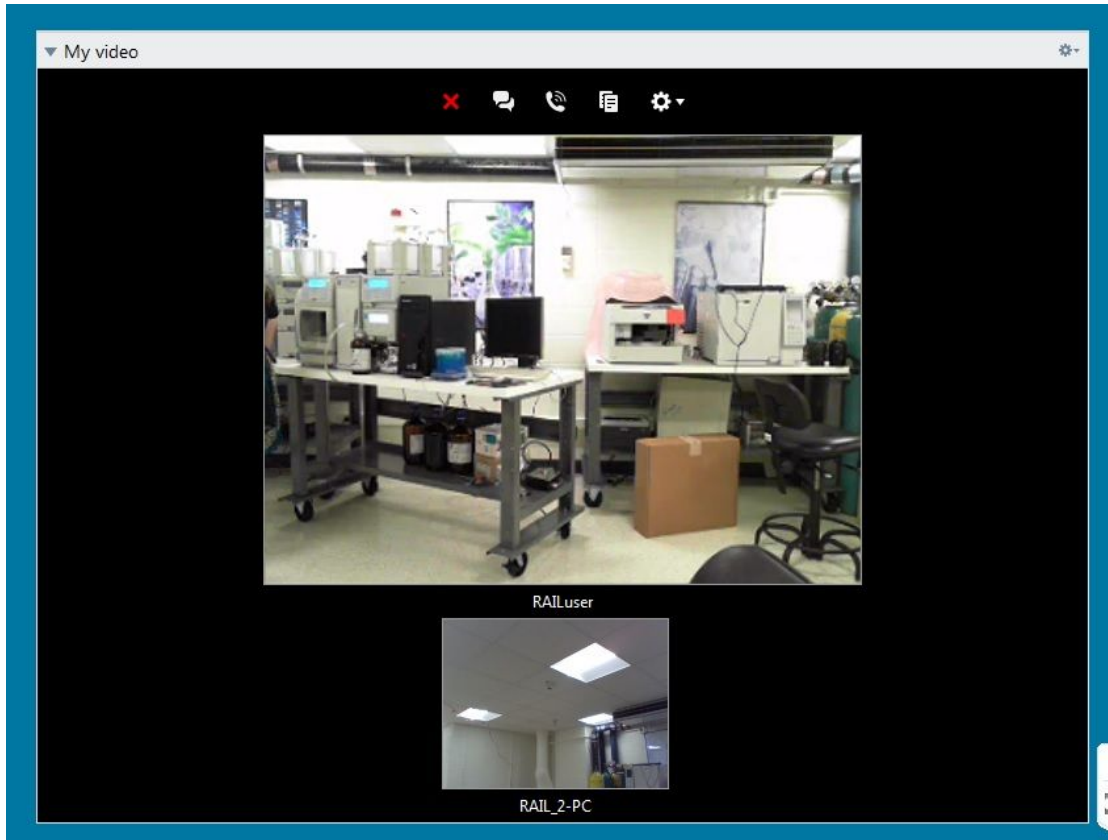
Volume [µl]	Instrument Method	Processing Method	Status	Inject Time	Lock Status
10.0	Nitrate Method 2	New Processing Meth...	Finished	5/11/2016 2:46:50 PM -04:00	
10.0	Nitrate Method 2	New Processing Meth...	Finished	5/11/2016 3:00:16 PM -04:00	
10.0	Nitrate Method 2	New Processing Meth...	Interrupted	5/11/2016 3:12:18 PM -04:00	
10.0	Nitrate Method 2	New Processing Meth...	Finished	5/11/2016 8:41:05 PM -04:00	
10.0	Nitrate Method 2	New Processing Meth...	Finished	5/11/2016 8:54:35 PM -04:00	
10.0	Nitrate Method 2	New Processing Meth...	Finished	5/11/2016 9:08:01 PM -04:00	
10.0	Nitrate Method 2	New Processing Meth...	Finished	5/11/2016 9:21:27 PM -04:00	
10.0	Nitrate Method 2	New Processing Meth...	Interrupted	5/11/2016 9:33:29 PM -04:00	
10.0	Nitrate Method 2	New Processing Meth...	Finished	5/12/2016 7:40:34 AM -04:00	
10.0	Nitrate Method 2	New Processing Meth...	Finished	5/12/2016 7:54:03 AM -04:00	
10.0	Nitrate Method 2	New Processing Meth...	Finished	5/12/2016 8:07:29 AM -04:00	
10.0	Nitrate Method 2	New Processing Meth...	Finished	5/12/2016 8:20:55 AM -04:00	
10.0	Nitrate Method 2	New Processing Meth...	Interrupted	5/12/2016 8:32:57 AM -04:00	
10.0	Nitrate Method 2	New Processing Meth...	Finished	5/12/2016 10:10:33 AM -04:00	
10.0	Nitrate Method 2	New Processing Meth...	Finished	5/12/2016 10:24:03 AM -04:00	
10.0	Nitrate Method 2	New Processing Meth...	Finished	5/12/2016 10:37:29 AM -04:00	
10.0	Nitrate Method 2	New Processing Meth...	Finished	5/12/2016 10:50:55 AM -04:00	
10.0	Nitrate Method 2	New Processing Meth...	Running	5/12/2016 11:04:25 AM -04:00	
10.0	Nitrate Method 2	New Processing Meth...	Idle		
10.0	Nitrate Method 2	New Processing Meth...	Idle		
10.0	Nitrate Method 2	New Processing Meth...	Idle		
10.0	Nitrate Method 2	New Processing Meth...	Idle		
10.0	Nitrate Method 2	New Processing Meth...	Idle		
10.0	Nitrate Method 2	New Processing Meth...	Idle		
10.0	Nitrate Method 2	New Processing Meth...	Idle		
10.0	Nitrate Method 2	New Processing Meth...	Idle		
10.0	Nitrate Method 2	New Processing Meth...	Idle		

4. A larger window will pop-up in the middle of the screen. To enable the video feed and the microphone, click on the camera icon and microphone icon in the video call box (highlighted in red below).

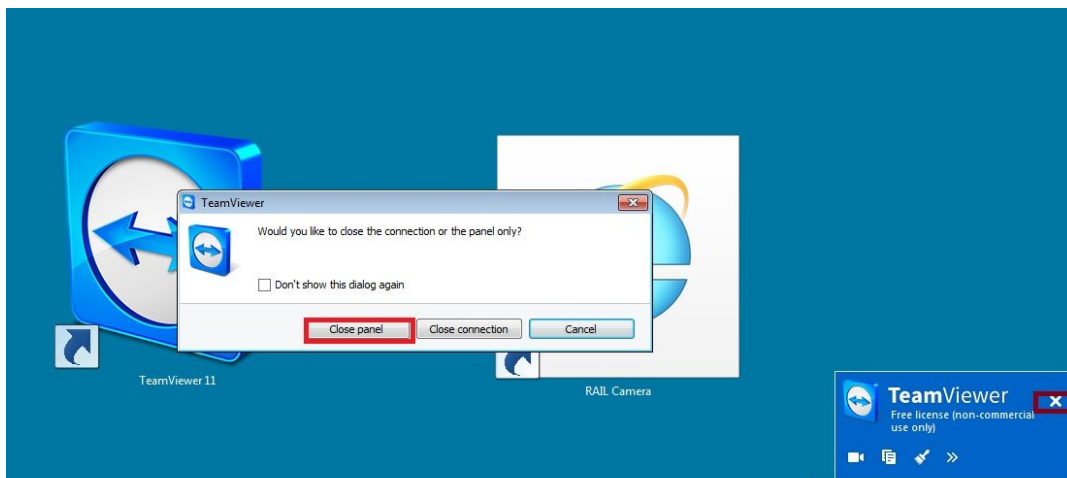


5. Once the camera has been enabled, your video feed will be visible in the lower box of the video chat screen. The person with whom you're video chatting with will be visible in the upper box of the video chat screen.



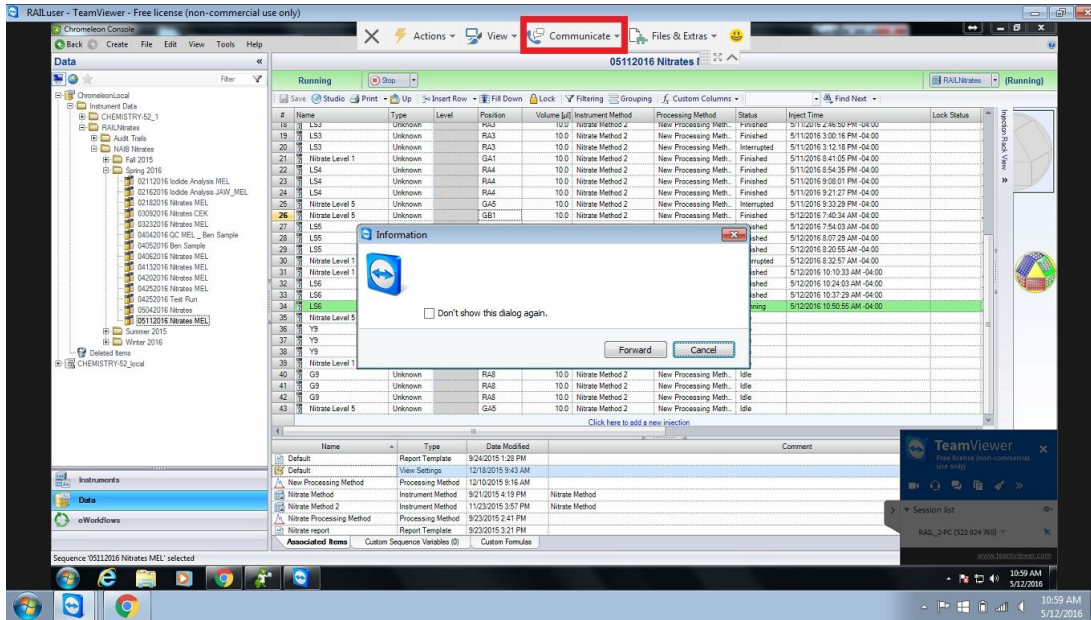


6. To exit out of the video chat click the “x” button and choose the “close panel” option. If you want to close the Team Viewer software altogether choose the “close connection option”.

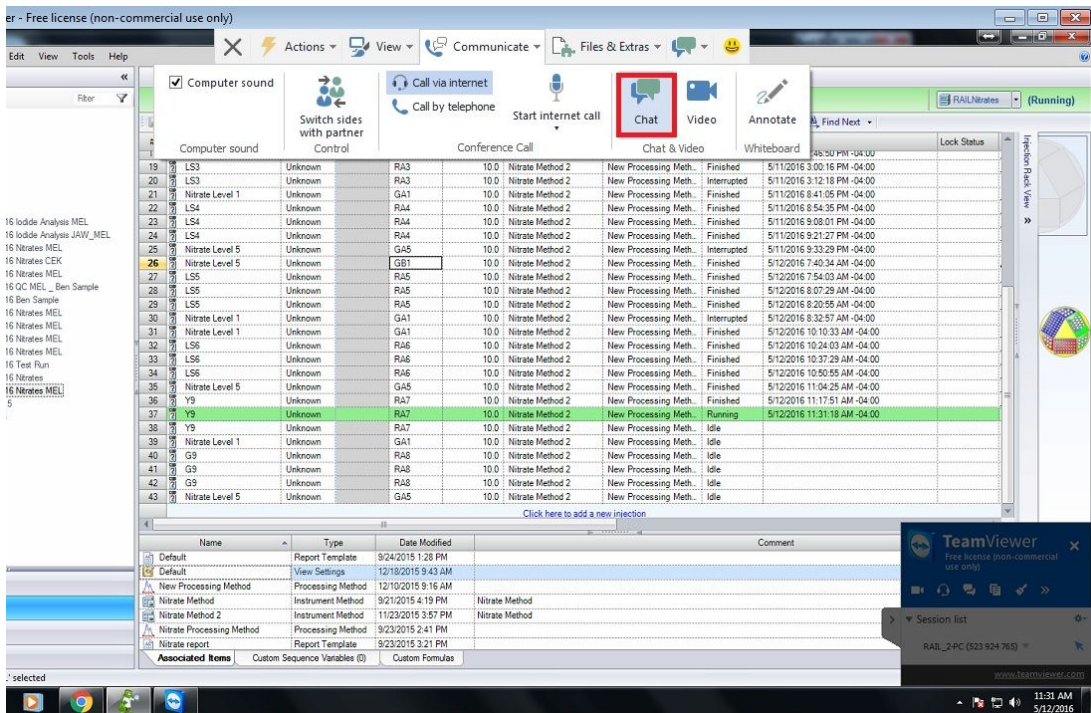


Messaging

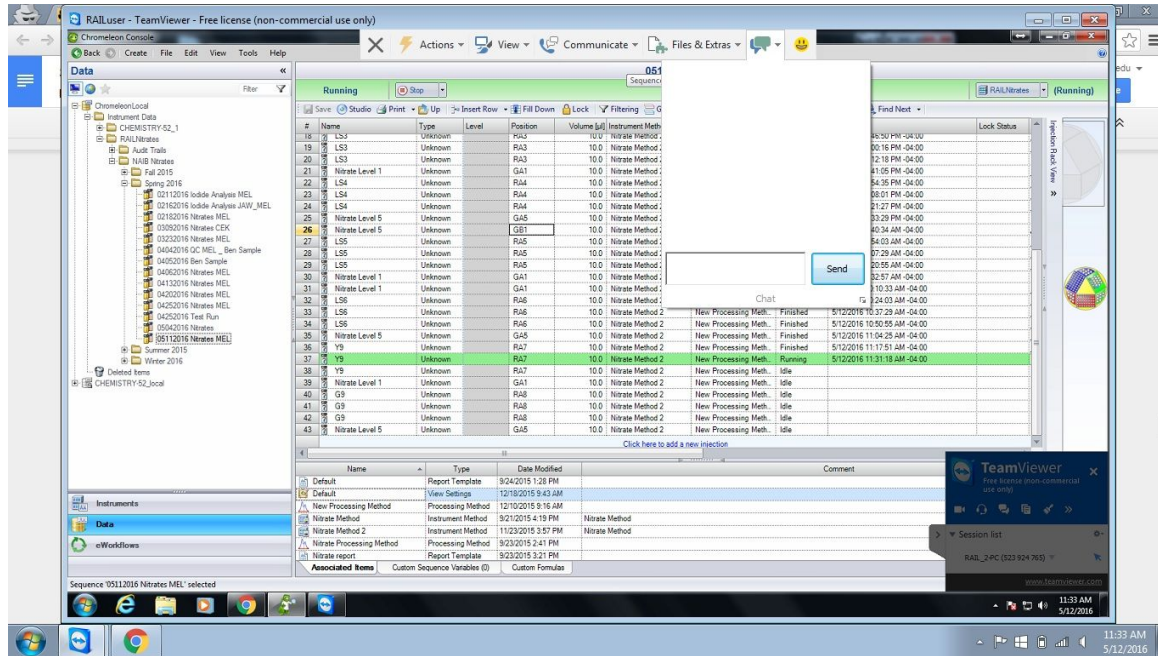
1. Once you have gained remote desktop access using the instructions above, click on the “Communicate” tab located in the top menu on the Team Viewer window.



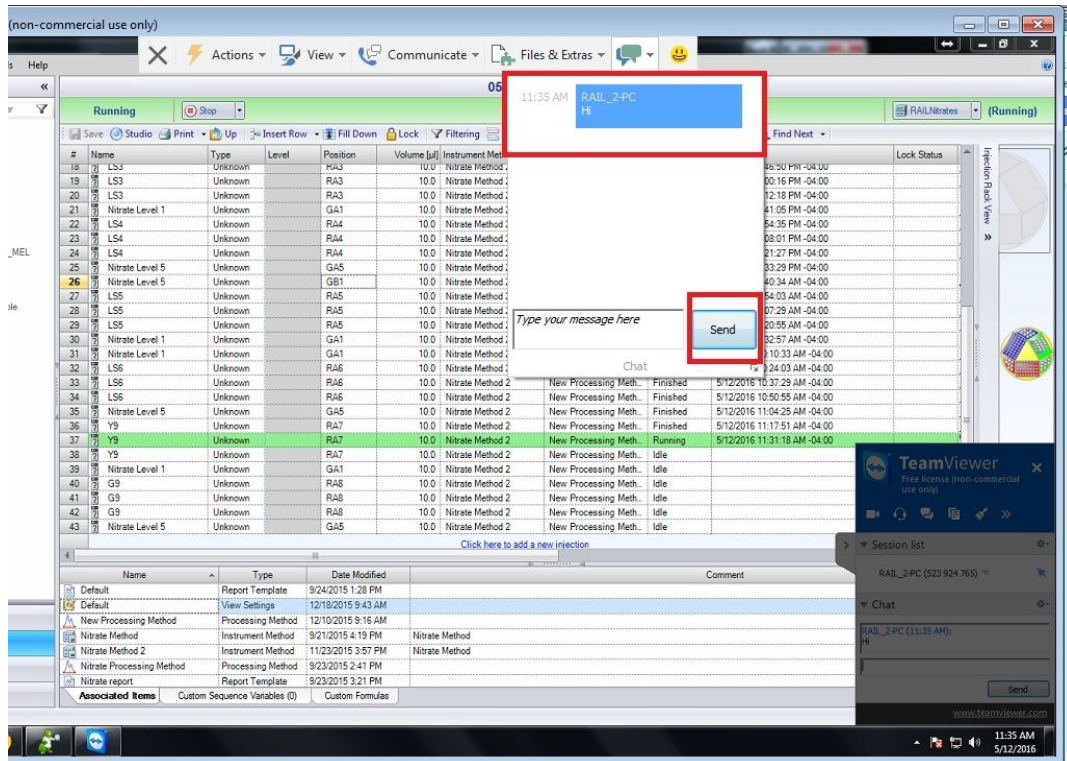
2. A menu will open underneath- click on the “Chat” button to initiate a chat.



3. A chat window will open- Type your message in the blank box adjacent to the “send” button.

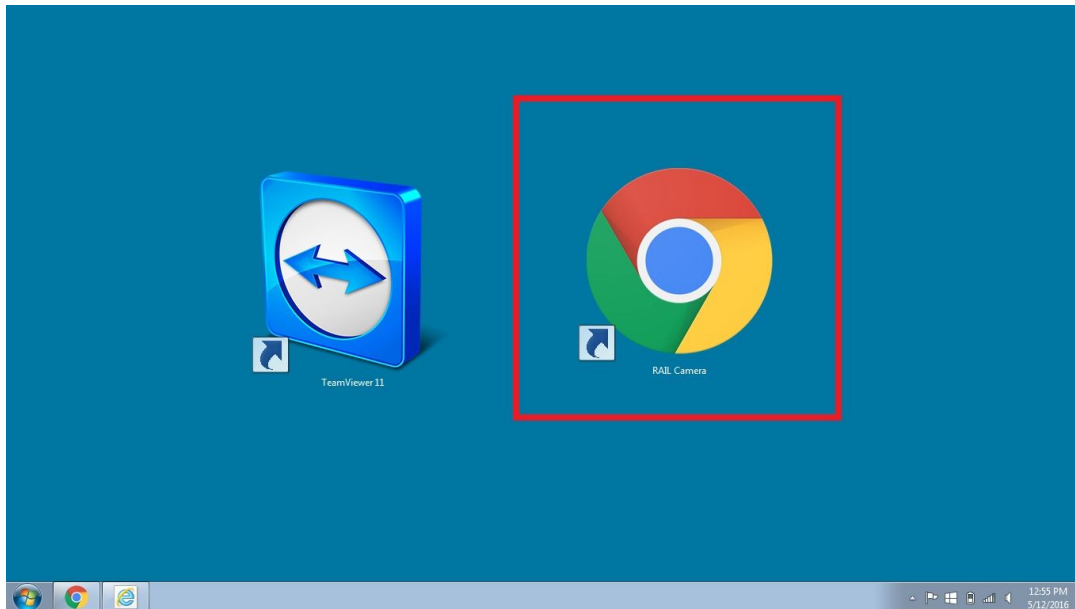


4. To send your message, click the “send” button in the chat box. Your message will appear in the large white chat box, and you now have ability to communicate back and forth with a person sitting at the Ion Chromatograph computer.

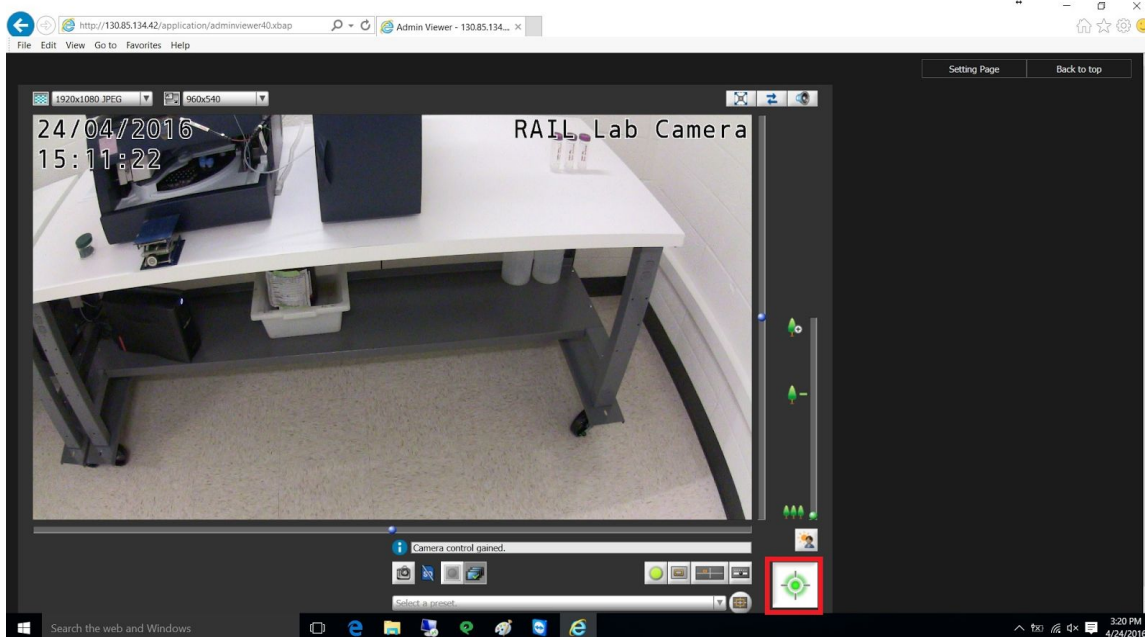


RAIL Camera Software

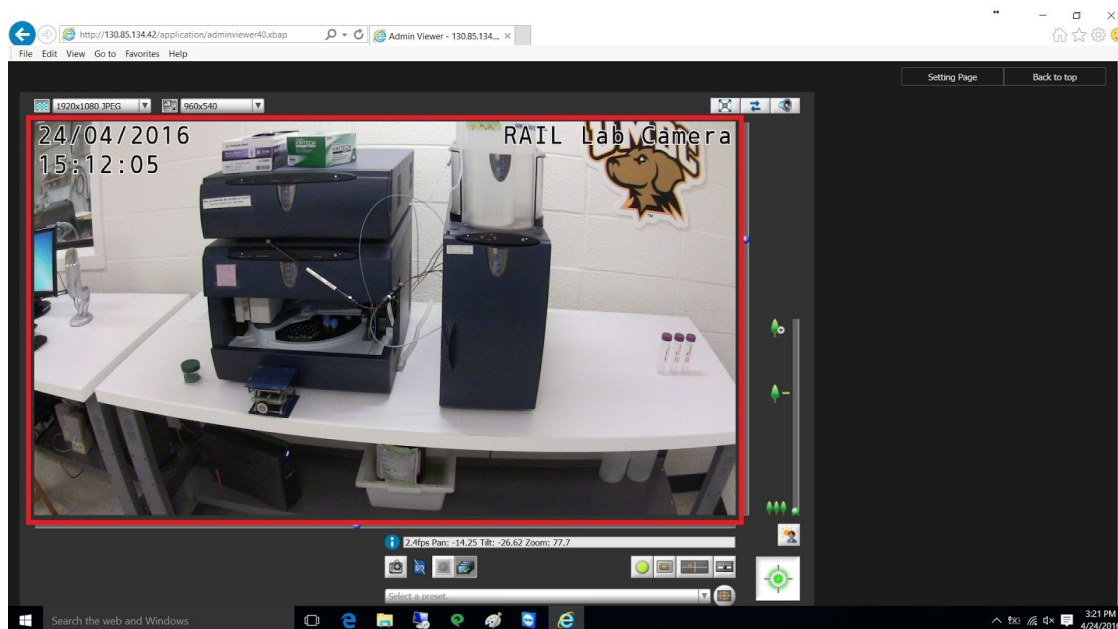
1. Double click on the “RAIL Camera” icon on the laptop desktop screen.



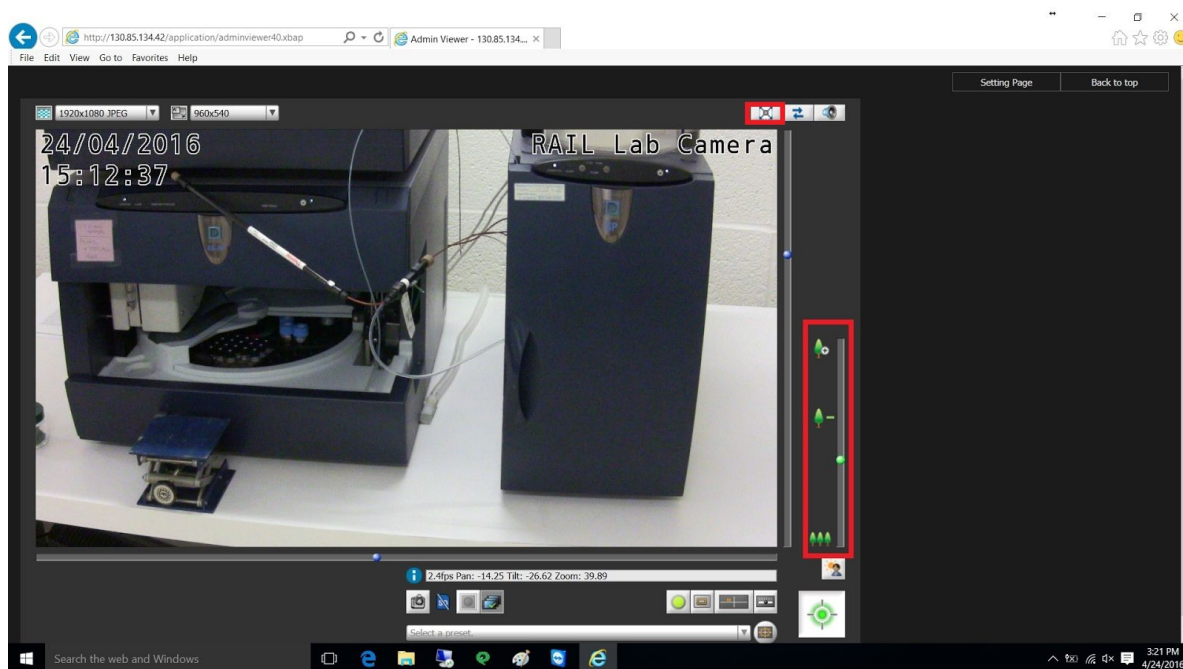
2. The camera will open to a view of the Ion Chromatogram Instrument. In order to gain control of the camera and the ability to move it around, click on the circular icon in the bottom right hand corner. Once you have gained control of the camera this icon will turn green.



3. You can now move the camera around by moving your cursor in the box showing the instrument to the area you wish to focus on.



4. In order to zoom in and out on different parts of the instrument, use the panel on the right hand side window with the tree icons. You can make the camera window full screen by clicking on the first icon in the upper right hand corner.



5. You now have full control of the camera and can utilize it to view different part of the Ion Chromatograph Instrument. To exit out of the camera, simply click the “X” icon in the top right corner of the internet browser window.

